



# THE SUMMERHILL

## FIVE BEDROOM DETACHED HOME

The outstanding five-bedroom Summerhill is perfect for growing families, crafted to the highest specification.

At the heart of the property is an impressive high specification kitchen and family area. Large feature windows and double doors leading onto the garden fill the room with light, creating the perfect communal area bringing families together. The luxurious lounge also boasts French doors opening onto the rear garden.

Further to this, the downstairs of this magnificent home hosts a dining room, cloakroom, study and a useful utility room that grants access to the garage.

Upstairs, the beautiful Summerhill home offers five double bedrooms, plenty of storage space and a family bathroom, as well as ensembles to three of these bedrooms. The magnificent master bedroom is enhanced with built in wardrobes and a stylish ensuite with large vanity and a spacious walk-in shower.



WEAVERS  
PARK



Clarendon  
Homes

[www.clarendonhomes.co.uk](http://www.clarendonhomes.co.uk)



WEAVERS  
PARK

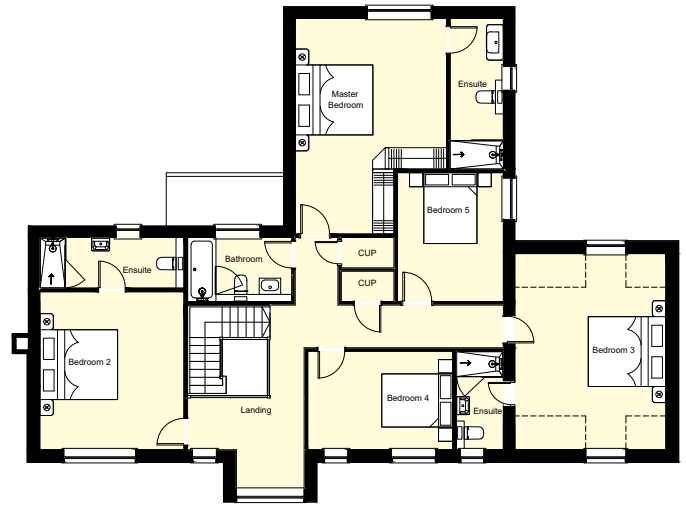
# THE SUMMERHILL

FIVE BEDROOM DETACHED HOME

## Ground Floor



## First Floor



ROOM	WIDTH MM	LENGTH MM	WIDTH FT IN	LENGTH FT IN
<b>GROUND FLOOR</b>				
LOUNGE	4063	5952	13' 4"	19' 6"
DINING	2997	4075	9' 10"	13' 4"
KITCHEN/FAMILY	5839	7954	19' 2"	26' 1"
STUDY	2712	2928	8' 10"	9' 7"
UTILITY	1825	3023	5' 11"	9' 11"
<b>FIRST FLOOR</b>				
MASTER BEDROOM	4625	6077	15' 1"	19' 9"
BEDROOM 2	4063	4452	13' 4"	14' 6"
BEDROOM 3	4258	5528	13' 11"	18' 1"
BEDROOM 4	2749	4089	9' 0"	13' 4"
BEDROOM 5	2983	3635	9' 7"	11' 9"

Total Internal Area - 250 sqm 2689 sqft